

CP series

Capacitive switches

Distinctive features and specifications



- ❑ Activated by the touch of a finger
Even with surgeon gloves
- ❑ 50 million cycles
- ❑ Auto-calibration function
- ❑ Bushing diameter 16, 19 or 22 mm
- ❑ Momentary or latching

ENVIRONMENTAL SPECIFICATIONS

- Sealing : IP68 and IP69K according to IEC 60529
- Triggered by flowing water
- Impact resistance : IK10
- Operating temperature : -20°C to +65°C
- ESD : complies with EN61000-4-2 (extended) ± 8KV (20 contacts) and ± 15KV (20 air discharges)

MATERIALS

- Case : aluminium, anodized
- Multi-wire leads section 0,22 mm² length 300 mm
- Cable, length 300 mm, section depending on switch model
- Connector : HE146V compatible with AMP/TYCO281839-3

ELECTRICAL AND GENERAL SPECIFICATIONS

- Max. current/voltage rating : 200mA 24VDC
- Supply voltage : 5 to 24VDC
- Life expectancy : 50 million cycles
- Power consumption non-illuminated : 7mA
- Power consumption illuminated : 25mA
- Operating force : 0N
- LED state for output image option :
1 LED : the LED is ON when the output is closed.
2 LEDs : first colour is ON when the output is open. Second colour is ON when the output is closed.

ADJUSTABLE SENSITIVITY

Connection to ground by means of the yellow wire increases sensitivity (momentary version only).



This switch should not be used in safety applications.

Wiring diagrams

	Non-illuminated	1 LED		2 LEDs	
		Output indicator	Independent	Output indicator	Independent
OFF-ON					
OFF-MOM					

Legend

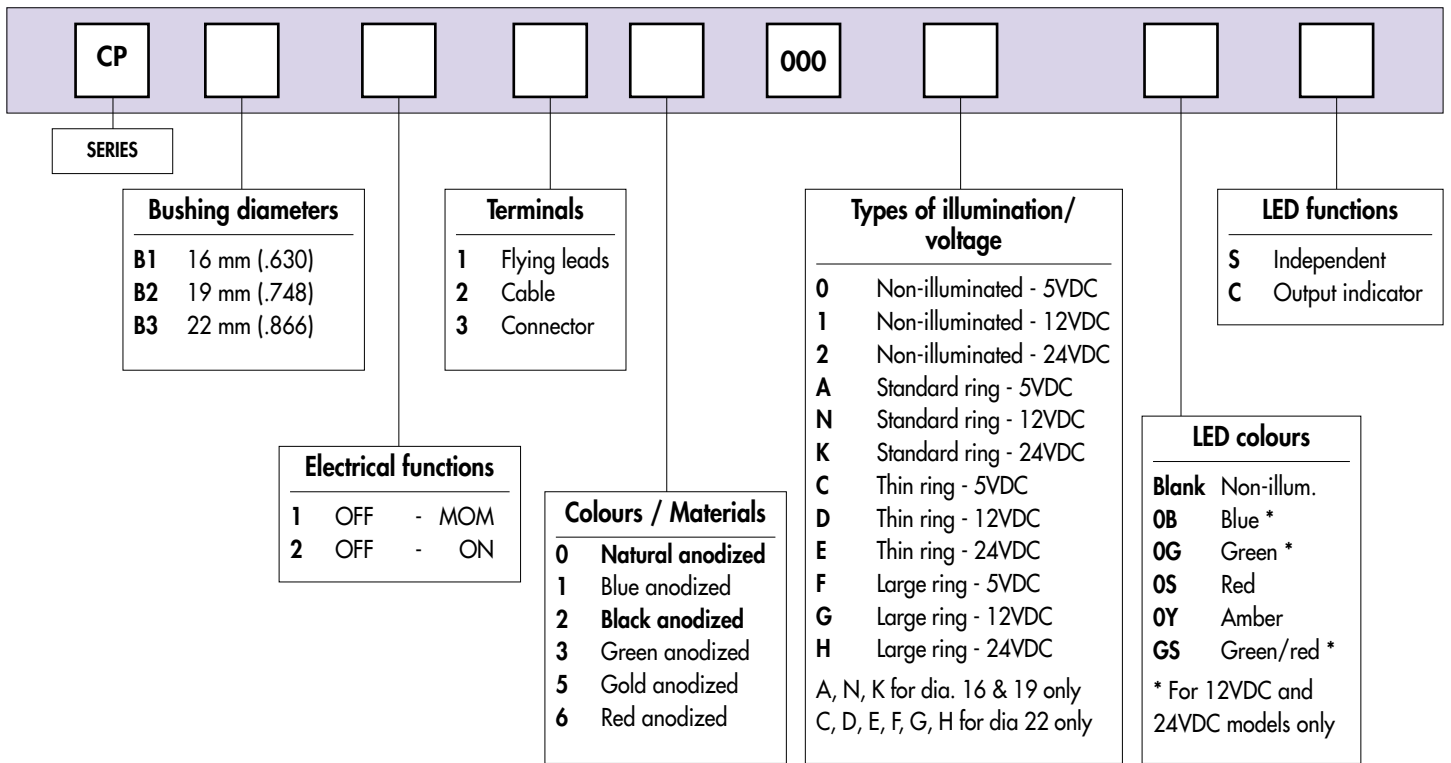
R red +V
Black black GND
W white output
Y yellow sensitivity
G green -LED 1
Blue blue -LED 2

*Wire colours may vary.
Always refer to the label
on the switch.*

CP series

Capacitive switches

Overview



On request

- Duration of activation 15 minutes for latching models (standard duration is infinite)
- Different lengths, gauges or colours for flying lead terminals
- Different cable lengths



NOTICE : please note that not all combinations of above numbers are available. Refer to the following pages for further information.

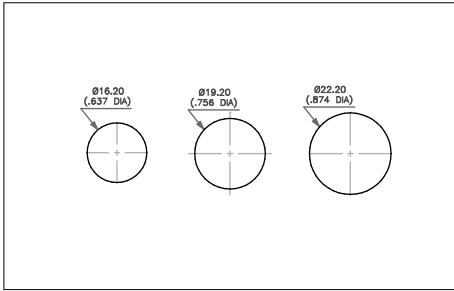


Packaging unit : 20 pieces

Dimensions : first dimensions are in mm while inches are shown as bracketed numbers.

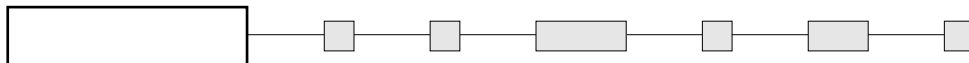
Tolerance : The general tolerance for dimensions in this brochure is $\pm 0,3$ (.012).

Dimensions, specifications and data shown in this brochure are subject to change without notice.



Shown with flying lead terminals

**MODEL
STRUCTURE**



Bushing Ø 16 mm (.630)

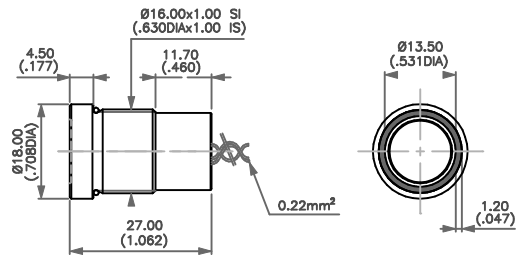


Momentary
CPB11

OFF - MOM

Latching
CPB12

OFF - ON



CPB111000N2AC

Bushing Ø 19 mm (.748)

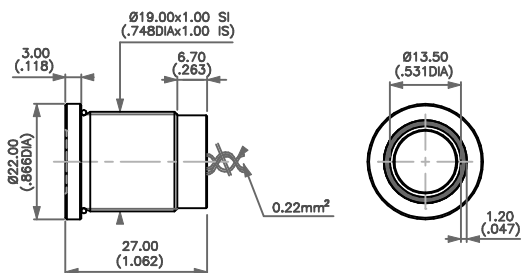


Momentary
CPB21

OFF - MOM

Latching
CPB22

OFF - ON



CPB211000N2AC

Bushing Ø 22 mm (.866)

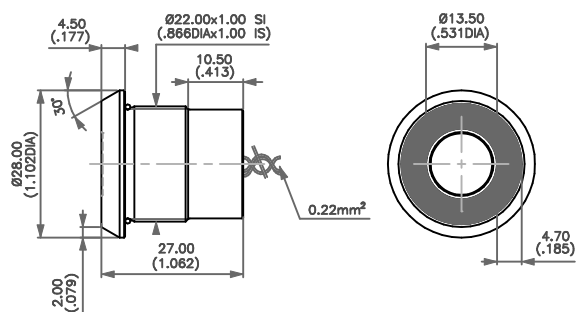


Momentary
CPB31

OFF - MOM

Latching
CPB32

OFF - ON



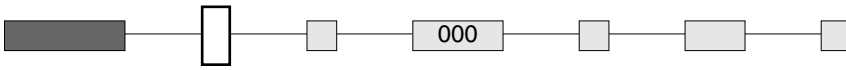
CPB321000G2AC

CP series

Capacitive switches

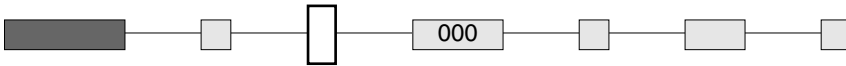
Options

TERMINALS



- 1 Flying leads
- 2 Cable
- 3 Connector

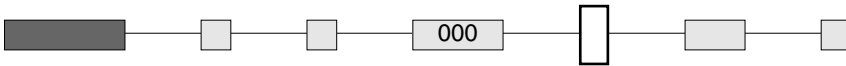
CASE COLOURS / MATERIALS



Code	Colour
0	Natural anodized aluminium
1	Blue anodized aluminium
2	Black anodised aluminium

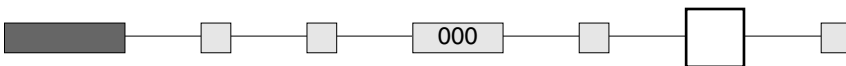
Code	Colour
3	Green anodized aluminium
5	Gold anodized aluminium
6	Red anodised aluminium

TYPES OF ILLUMINATION



	5VDC	12VDC	24VDC
Non-illuminated	0	1	2
Standard ring (Ø 16 & 19 only)	A	N	K
Thin ring (Ø 22 only)	C	D	E
Large ring (Ø 22 only)	F	G	H

LED COLOURS



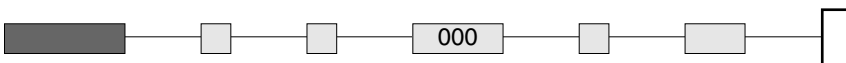
Blank Non-illuminated

0B : blue - **0G** : green - **0S** : red - **0Y** : amber - **GS** : green/red



Blue, green and green/red LEDs available on 12VDC and 24VDC models only.

LED FUNCTIONS



- S Independent
- C Output indicator